

KEY FABRICS: LIGHTWEIGHT QUICK DRY  
NYLON,

# DISHANG FABRICS

TREND SS18

PACKABLE LIGHTWEIGHT

# KEY FABRICS --THE PARACHUTE STYLE FABRIC. PROVIDES VOLUME AND COVER BUT ESSENTIALLY PACKABLE



KEY FABRICS - WAXED FABRICS MIXED WITH NYLON - HERITAGE FABRIC MIX



KEY FABRICS SHINY SURFACE FABRICS IN LIGHTWEIGHT NYLONS LOW LUSTRE SATIN FINISHES



## KEY FABRICS

A small Colorado-based company, Voormi, is touting a technology that produces a waterproof, breathable textile with only a single layer of material. It could be the most significant advancement in outdoor clothing since the first Gore-Tex jacket with a waterproof-breathable membrane debuted in the mid-1970s.



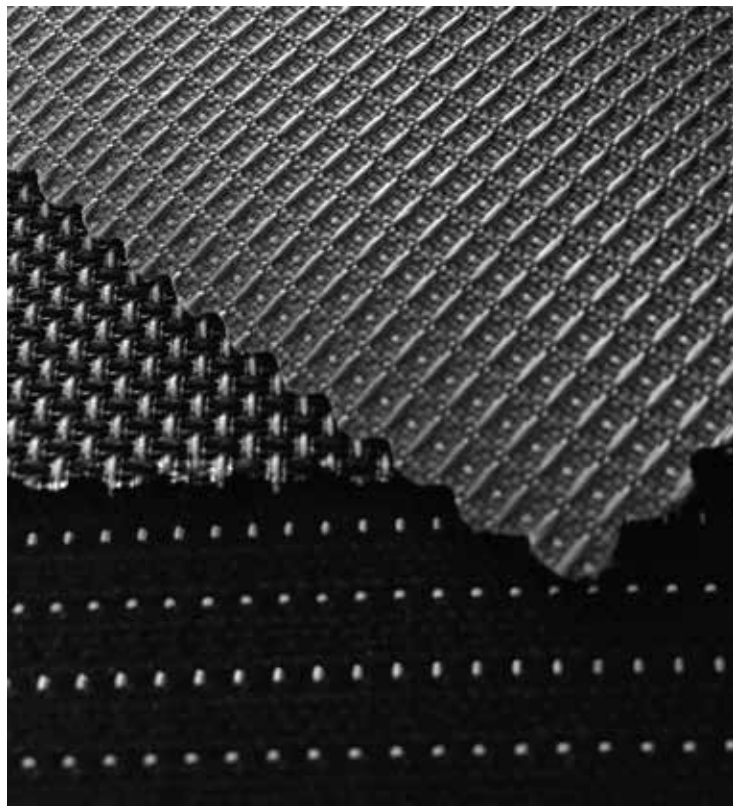
# KEY FABRICS GREY MARL TECHNICAL LOOK



# KEY FABRICS VENTILE - NIGEL CABOURN COTTON



Rethink reflective fabrics. Abrasion-resistant and lightweight, reflective nylon blends by Chi Hsin Weaving ( Taiwan Functional Textiles member) are engineered for motorcycling suits, yet inspire designers for applications in other apparel industry categories. Segment crossover is a key concept at Techtextil 2015





## KEY FABRICS - MATT RUBBERISED PU



# KEY FABRICS - TEXTURED NYLON & PAPER LIKE RIPSTOP NYLON



KEY FABRICS - About the IR Active Water Resistant Down  
ThermaDown™ utilizes a natural particle-based thermoreactive nano-coating that, through the emission of infrared energy, increases the natural benefits of down. Using body heat as a catalyst, the ThermaDown™ IR active down utilizes a body's emitted heat by trapping that energy in the particles coated on the down and transmitting it back within the high-infrared spectrum. This infrared energy is easily absorbed back into the body providing all the benefits of infrared subcutaneous absorption – gently increasing circulation helping to re-oxygenate muscles and keep the body temperate. HyperDRY™ was developed using nanotechnology to create the most effective water resistant down on the market. These methods provide an invisible coating that does not compromise the texture or warmth of the down.



KEY FABRICS stretch 2L fabric using technical bonded construction,



ONS

嵐雪水熱土全天候裝備



KEY FABRICS XYTLITE Running Windbreaker was made out of an exceptionally lightweight and highly water-resistant Japanese nylon. A mesh-backed crossback ventilation flap, and laser-cut ventilation patterns at the upper side panels help regulate temperature.



## KEY FABRICS - METALIZED NYLON



# KEY FABRICS - MICRO PRINTS, SPRAY PIGMENT PRINTED EFFECT, LANDSCAPE PRINT



# KEY FABRICS - DYNEMMA - FLOATS ON WATER AS STONG AS STEEL

THE  
**DYNEEMA®**  
PROJECT



BLACK RABBIT



# KEY FABRICS - PIGMENT COLD DYE WATERPROOFED FUNCTIONABLE OUTERWEAR NORTH SAILS & ISAORA



# KEY FABRICS - PAPER LIKE SHEER NYLON



## KEY FABRICS - HONEYCOMB GEOMETRIC JACQUARD WEAVE JERSEY



# KEY FABRICS - QUILT AND SOFT SHELL HYBRID MIXES



# KEY FABRICS - MATELLEASE QUILTING TECHNOLOGY AND AERO INSERTED QUILTS



## KEY FABRICS - RUBBERISED SHELLS



# KEY FABRICS - SPRAYED NYLON EFFECT



**GRAPHENE**  
THE 2D MATERIAL THAT COULD CHANGE EVERYTHING

VISUALCAPITALIST

GRAPHENE CAN BE SYNTHESIZED FROM GRAPHITE TO CREATE THE **THINNEST, STRONGEST AND MOST CONDUCTIVE** MATERIAL KNOWN TODAY.

GRAPHENE CAN BE ISOLATED IN **1 ATOM THICK** SHEETS OF CARBON ATOMS ARRANGED IN A HONEYCOMB PATTERN.

LENGTH OF A HEXAGON'S SIDE: **0.142 NANOMETERS**

GRAPHITE FLAKES ARE ACTUALLY MADE OF MANY LAYERS OF GRAPHENE STACKED ON TOP OF EACH OTHER, WITH WEAK BONDS HOLDING THEM TOGETHER.

**3 MILLION** SHEETS OF GRAPHENE STACKED ON TOP OF ONE ANOTHER IS JUST **1MM THICK**

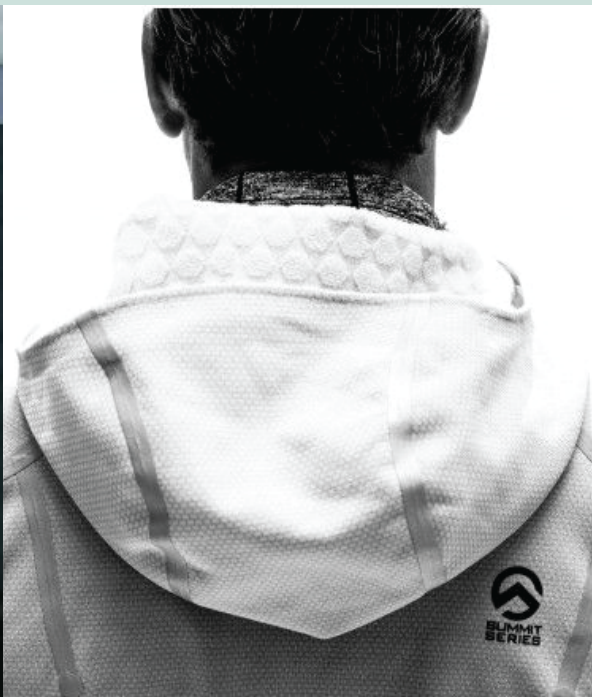
GRAPHENE'S UNIQUE PROPERTIES

The infographic features a dark blue background with a molecular structure of carbon atoms. It includes several icons: a ball-and-stick model of a carbon atom, a honeycomb lattice of carbon atoms, and a stack of three layers of carbon atoms. The text is presented in white and green, with key statistics highlighted in bold.





# KEY FABRICS - TEXTURED BACK SOFT SHELL - GEO PATTERN



# KEY FABRICS - JERSEY MELANGE



## KEY FABRICS - JERSEY KNIT MELANGES



# KEY FABRICS - BLOCKED MIXES NYLON/JERSEY/ SOLID/HEATHER



# KEY FABRICS - METALISED NYLON

